

**LIQUID LEVEL FLOAT GAUGES Series IL**

- For LPG storage containers up to 1700 mm diameter
- A top quality product designed and manufactured according to PED directive and ISO EN 13799 testing requirements.
- Application: The IL series gauges are widely used to indicate liquid levels of fuels, hydraulic fluids, lube oils, liquefied gases such as propane, butane, ammonia, etc...
- The IL series gauges are used for tank diameter up to 1700 mm and tank pressure up to 25 bar. Float is counterbalanced for low specific gravity fluids.
- Gauge can be equipped with direct single or double dial
- Extension of 240 mm is also available for IL series.

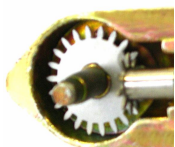


*According to PED Directive  
EN 13799  
CE Marked*

Model	CAPACITY (Lt.)	Tank	Ø Tank	Code
IMR 1000	990/1000	Horizontal	800	ACS110100
IMR 1750	1750/1800	Horizontal	1000	ACS111100
IMR 3000	3000/5000	Horizontal	3000	ACS112100
IMR 13000	10000/12500	Horizontal	1700	ACS113100
IMR 1250 E	3000/5000	Horizontal	1250	ACS110125
IMA 500	500	Vertical	800	ACS110300
IMA 1000	1000	Vertical	1000	ACS111300
IMA 1650	1500/1650	Vertical	1200	ACS113300
IMA 2250	2250/2300	Vertical	1200	ACS114300
IMA 4500	4500	Vertical	1564	ACS115300
IMS 1000	990	Spherical	1200	ACS110500



*High accuracy gauging*



*Stainless Steel mechanism:  
NONMAGNETIC GEARS*



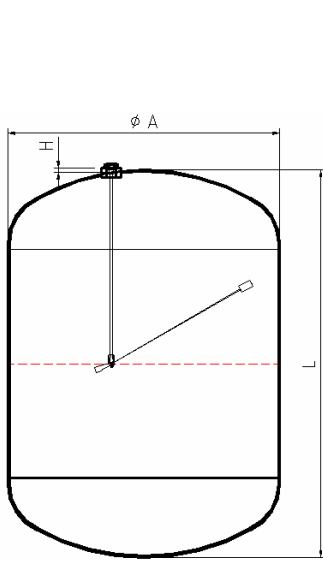
*High-tech PVC  
Float*



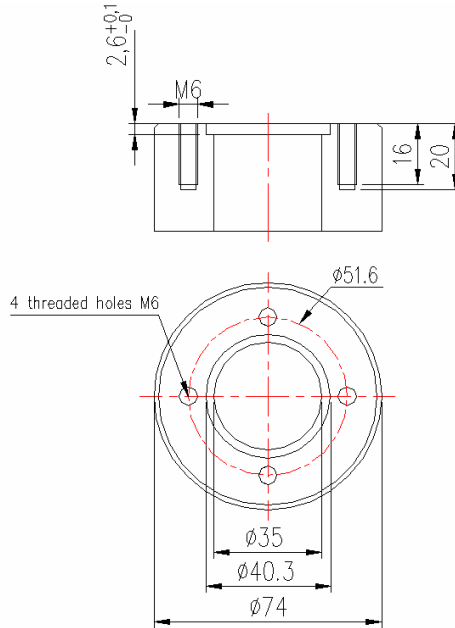
*Closed gear housing*

*See reverse side for dimensional data, materials, features and technical specifications*

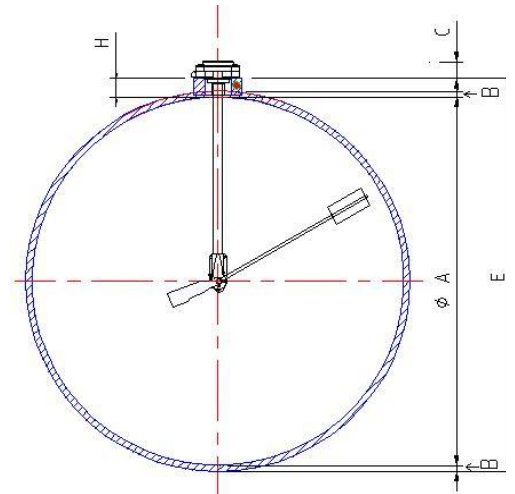
Standard Manhole: H dimension = 22,5 mm according to EN 13799



**Vertical tank**  
Level Gauge: **IMA version**



**Coupling sleeve**  
welded with tank



**Horizontal tank**  
Level Gauge: **IMR version**

### Features / technical specifications

- Solid zinc alloy die casting
- Flanged connection
- Screws: 4 pieces M6x20. Other sizes available on request
- Fixing hole centers 51.6 mm
- Aluminium Tube and rod
- Low friction, smooth acting, non jamming
- **Stainless steel gear mechanism. Free running, won't slip or stick**
- Axle of aluminium
- Float made of closed cell PVC
- Magnets: Neodimium. Strong magnets gauge equipment for good accuracy of the reading of tank content
- Plastic magnets housing: NONMAGNETIC
- Seal ring NBR according to EN 549
- Dial hermetically sealed, clear readable display for liquid levels from 5 to 95%
- Max. test pressure 25 bar
- Stainless steel screws with 5 mm inner hexagon for flanged version
- **OUR EXCLUSIVE PRODUCTION Closed gear housing zinc alloy for protection from metal particles and impurities.** These features guarantee long-life working and high accuracy measuring process.
- Available for vertical (as illustrated) horizontal and angled installations
- Transmitter system available for automotive & domestic installations



**Strong Magnets**  
Plastic magnets  
housing

### Options

- All sizes available for lift truck & autogas up to a diameter 1700 vessels
- Many approvals available, other can be made on request
- **Extension can be mounted on the level gauge head in place of dial, to raise the dial of 240mm**
- Various version of heads and covers available: octagonal and oval head, zinc alloy and plastic covers, blind and w/porthole zinc alloy cover, hinged cover available.

### Advantages

- Dials compatible to Rochester Junior, SRG, Cotrako type gauges (no offset)
- Gauges can be individually specified by customer

**- Personalization on request upon receipt of technical specifications -**



ISO 9001:2000 Certified Company

Samtech s.r.l.  
Via dell'Industria, 16  
35030 Cervarese Santa Croce (PD) - Italy  
Tel. +39 049 9903931 - Fax +39 049 9903928  
e-mail: info@samtechgas.com

www.samtechgas.com

C.F. P.IVA IT00237260286  
N. Mecc. PD 036127  
Reg. Imp. PD 44909  
R.E.A. PD 251284

Capitale Sociale € 77.500,00 i.v.